



SCHARF LEV

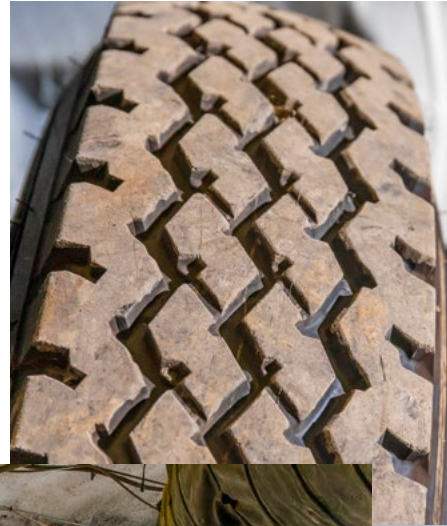
Battery Light Electric Vehicle



SCHARF LEV 100 % electric



- + 100% Electric – Zero Emissions
- + 150 km range - Combined Driving Cycle
- + Optional: Range extender available
- + 2 hours charging time (Three Phase)
- + High Safety Standard due to liquid cooled battery cells



100% Electric - 0 % Emissions

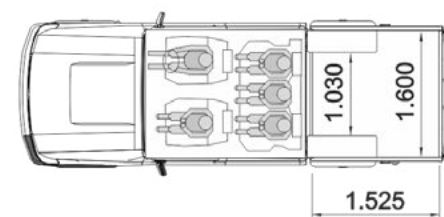
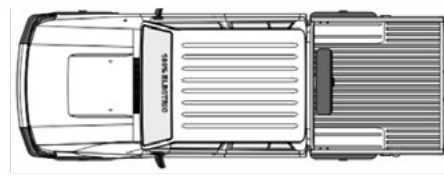
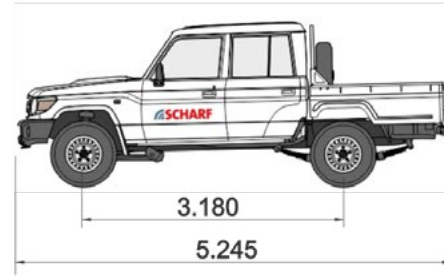
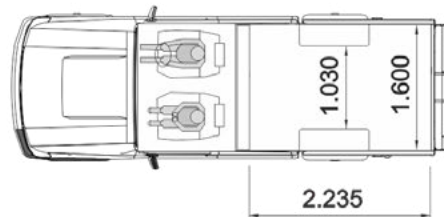
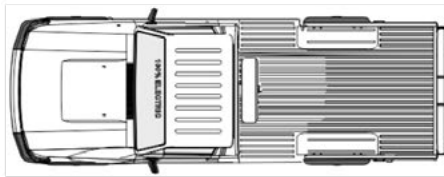
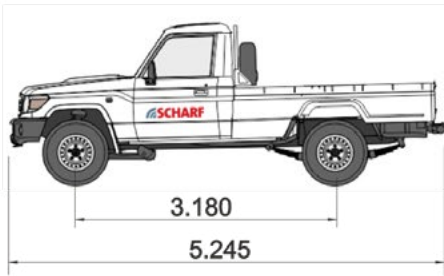
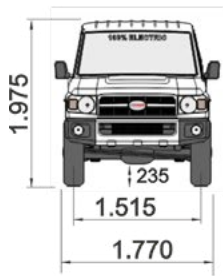
- + Reduces your carbon footprint and improves overall sustainability of your operations
Less energy consumption of vehicle, reduced mine ventilation
- + Improves the working conditions of your employees due to reduced noise level, emissions free operation, more comfortable ride
Less fatigue and safer operation
- + Reduces operating costs by significantly reducing maintenance
Lower OPEX, improved running time



Product dimensions

2-Door

4-Door



PARAMETER	Single Cab (2-Door)	Double Cab (4-Door)
WEIGHTS (kg)		
Kerb Weight	2,420	2,540
Gross Vehicle Weight	3,200	3,200
Payload	780	660
DIMENSIONS (mm)		
Length	5,195	5,245
Width	1,790	1,790
Height	1,975	1,960
Wheelbase	3,180	3,180
Ground Clearance	235	235

SCHARF LEV refueled electric



- + Highest energy efficiency – energy recuperation on descents and when braking
- + Based on highly emissions free operation and significantly reduced heat emission – considerable reduction in mine ventilation cost
- + Substantially reduced overall maintenance efforts and cost

High Safety Standard:

- + Battery cells are cooled by means of a dielectric coolant
- + Each single cell is always kept within optimal operating temperature

Prime Quality:

- + Highest quality of the basic vehicle
- + Proven electric drive components by automotive Tier 1 suppliers
- + Seamless integration of all system components

Product Specifications

PERFORMANCE

Range	150 km
DC Fast Charger (Optional)	43 min
On-board Charger (Three Phase)	2 hours
On-board Charger (Single Phase)	6 hours
Gradeability (Max)	45° (Low Range)
Top Speed	145 km/h

BATTERY

Chemistry	Li-Ion NMC
Cooling Method	Liquid Cooled
Capacity	106 Ah / 40.24 kWh

DRIVE

Inverter Peak Current	400 A
Motor Type	Permanent Magnet Synchronous with Resolver
Continuous Power	60 kW
Peak Power	100 kW
Continuous Torque	655 Nm
Peak Torque	1000 Nm
Transfer Box	2-High , 4-High , 4-Low
Diff Lock	Front and Rear

Product Features

SAVETY

Airbags	Standard
ABS	Standard
SAHR Safety Brake (Electric Park Brake)	Optional
Rear View Camera	Optional
ROPS & FOPS	Optional
Reverse Alarm	Optional

CHARGER INTERFACE

CCS Type 2	Standard
CCS Type 1	Optional
Other	On Request

INTERIOR

Air conditioning	Standard
------------------	----------

CONTROL AND DRIVING CONCEPT

Fully Electronic Control equipped with CAN Bus	Standard
On-board Machine Diagnostic	Standard
Data Logging	Standard
Customised Data Logging	Optional
CAS (Collision Avoidance System) compliant ISO-21815	Optional
Automatic Decline Speed Control (ADSC)	Optional
Door – Brake Interlock	Optional
Automatic Emergency Brake Protection	Optional
Mine Communication Network Connectivity	Optional
Automatic Brake Test	Optional

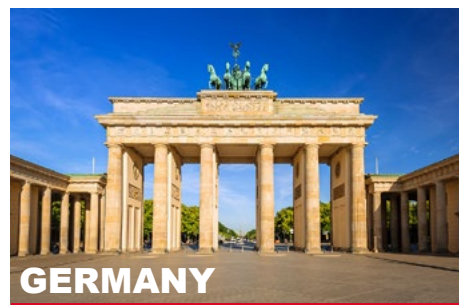
SMT SCHARF Group

The SMT Scharf Group is the global technology leader for derailment-proof monorails and floor mounted Duorail-vehicles in underground mining and tunneling. Our portfolio expansions and organic growth in the area of tunnel logistics and rubber-tyred vehicles have given us an even broader position as a comprehensive solutions provider, enabling us to offer our global customers individual solutions.

The Scharf brand has been known for high machine quality and reliability for over 70 years. Our solutions are the first choice when it comes to maintaining high safety standards in particularly challenging geological environments.

Hidden champion, world leader in the niche!

With our worldwide network of subsidiaries and commercial agencies, we ensure optimum support for our globally active customers. No matter in which time zone and in which national language, our specialists are locally available for you.



SMT Scharf GmbH
Römerstr. 104
59075 Hamm
Germany

P +49 2381 96001
F +49 2381 960324
info@smtscharf.com
smtscharf.com